

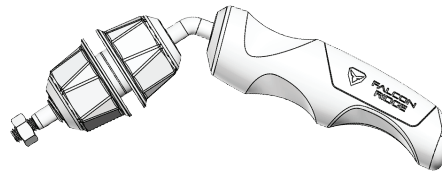


FALCON RIDGE

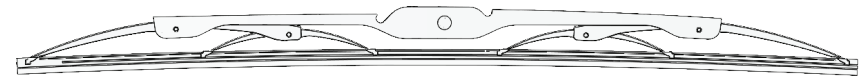
Installation Manual for Wiper Kit

Contents:

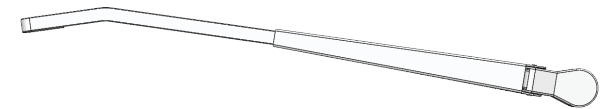
Handle assembly



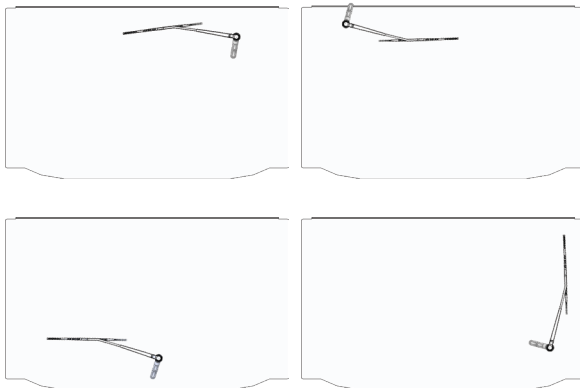
Wiper blade



Wiper arm

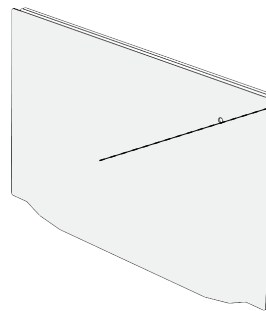


Installation:



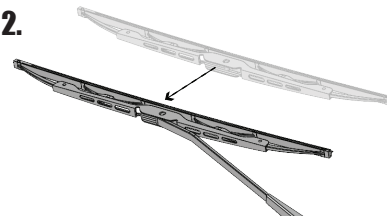
Find your desired location for the wiper kit as illustrated in the images above or any position that best fits your needs.

1.



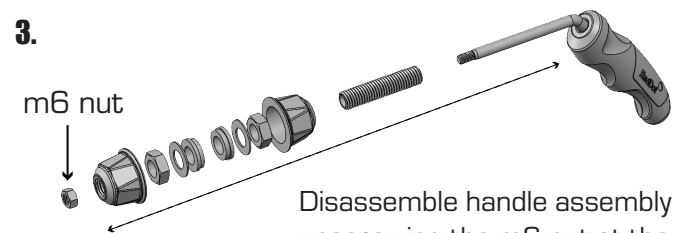
Once the desired location is found, Drill a 1/2" hole in that location of your windshield.

2.



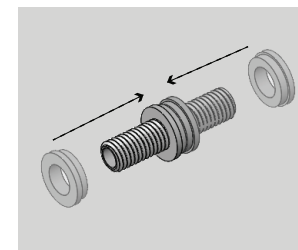
Assemble the wiper blade on the wiper arm.

3.



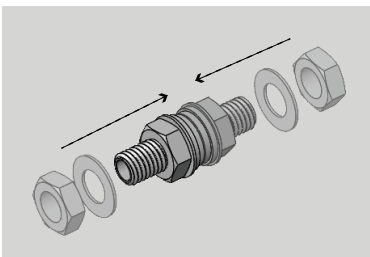
Disassemble handle assembly by unscrewing the m6 nut at the end

4.



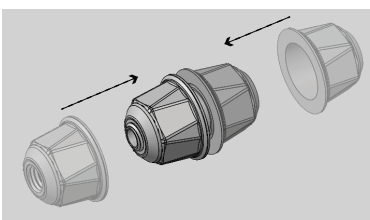
Insert threaded sleeve through the hole in windshield. Position the sleeve as close to the center as possible. Install the two rubber washers so the sleeve is secure.

5.



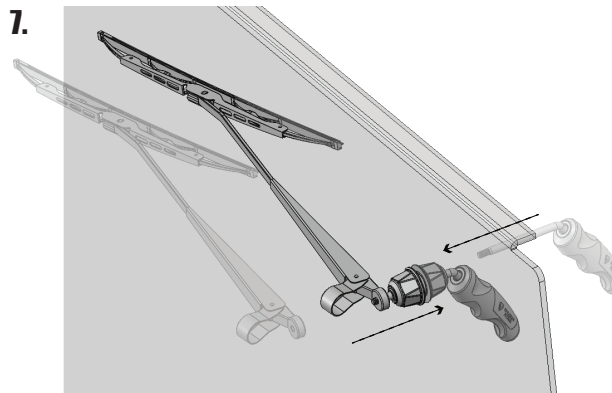
Tighten the sleeve assembly with metal washers and nuts from both sides.

6.



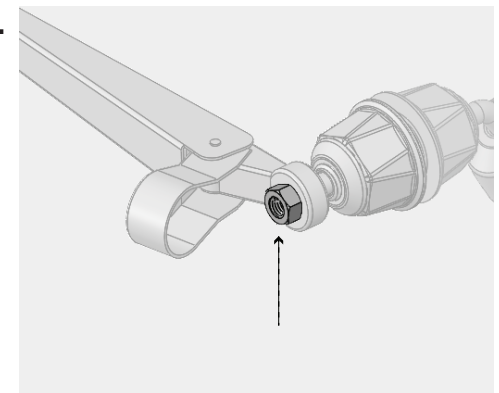
Assemble two caps on the sleeve from both sides by threading them into place.

7.



Assemble handle rod through the sleeve and locate the wiper arm.

8.



Finish the assembly by tightening m6 nut and close the wiper arm cover.