



FALCON RIDGE

3510-1 Port Jacksonville Pkwy, Jacksonville, FL 32226

800-213-7981

Instructions for Installation and Care of

Kawasaki 4010 Mule

Soft Door Kit

KAW-4010-SDK01

Notice: Do not smoke inside the cab or expose the enclosure to direct flames. Cab is Flammable.

1. Be sure to read these instructions thoroughly before unrolling and installing the 4010 Soft Door Kit. The installation is best done when the temperature is 65 degrees F. or warmer. This is to help the adhesive Velcro stick to the roll cage. If installation must be done outside in cold weather you must keep the Velcro warm until ready to install. You may also want to have a hair dryer or similar device to warm the roll cage as well.
2. Carefully unroll the Cab Enclosure on a large flat surface that is clean and free of dirt or other material that may soil or scratch the windows of the Cab. It will help to raise the bed prior installation.

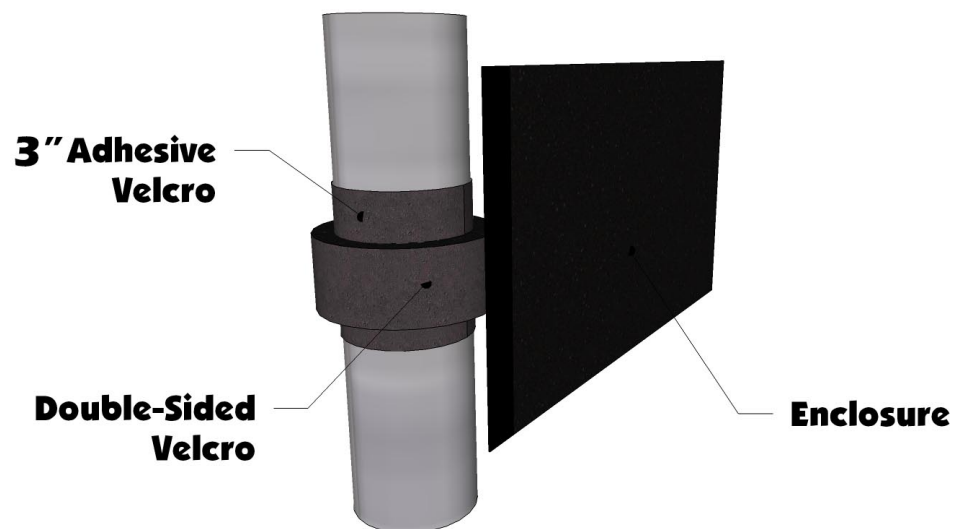
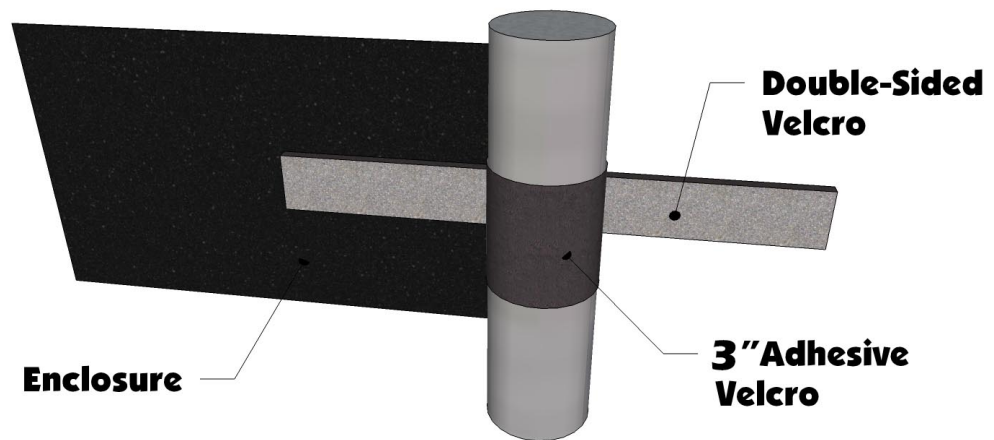
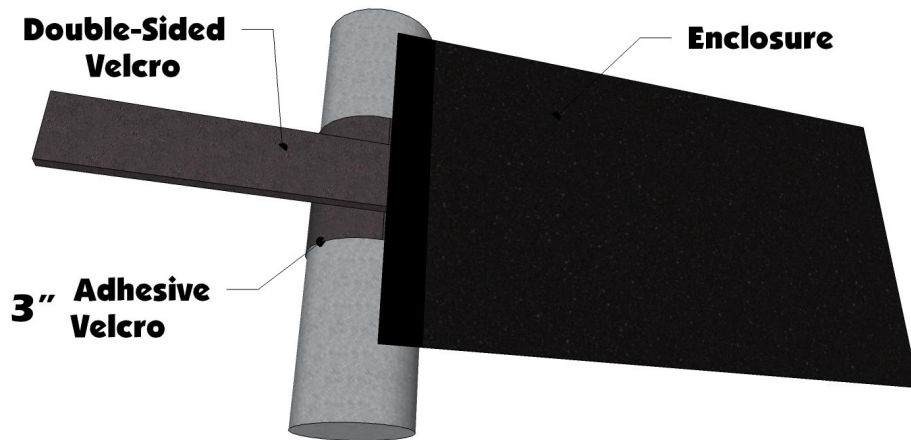
3. Check over the parts included in the carton with the parts list shown below:

Velcro Hook strips:	18 each	3" long
“ “	4 each	4" long
“ “	2 each	5" long
“ “	2 each	6" long
“ “	2 each	8" long
“ “	2 each	14" long
Snap studs	9 each (1 extra)	
Cab Enclosure	1 each	

4. To begin you must first remove the windshield and hard top so that you may install the Soft Door Kit. After removing these pieces you will want to start on the top of the door first and move your way down to the sides. Across the top of the doors is a 14" strip that will fasten to the top roll bar on either side of the roll cage on the bars going front to back. Center the door and place the 14" adhesive strip on the bar so that the Velcro is facing up and towards the inside. See Photo below.



5. Now work your way down the front first placing 3" adhesive Velcro on the inside of the roll cage where each of the double-sided strips are sewn to the edge of the door. The diagrams below show how this works.



6. Now work your way down the back of the door attaching the adhesive Velcro strips that match up with the Tabs sewn along the edge.
7. Once all the Velcro is attached install the snaps along the front fender.

8. Mark the desired locations for the stud snaps on the front fenders. You will use 4 per side. Then install the stud snaps to the Mule using only a #2 Phillips screwdriver. **NOTE: The best way to install the snap studs is to put them in the sockets in the door first. Then push them into the plastic to make an mark. Then pull the screw stud out and screw it into the plastic where the mark was made.**
9. To open and stow the doors, move the zipper fully rearward and fold the bottom portion of the doors up. Then begin to form a vertical roll with the door by rolling it inward from the front edge toward the rear of the door. Secure in place using the two hook and loop straps provided. Try to form a roll approximately 2" in diameter to assure that the door will not stick out very far while stowed.

Cleaning and Storage Recommendations:

1. Before removing the Falcon Ridge Cab for storage, make sure it is very clean in order to prevent scratching of the window panels. Clean with a soft rag (I recommend a Flannel or Micro Fiber Cloth) or sponge using a mild liquid detergent soap and warm water solution. Never rub the windows with a dry cloth or rag! Let the Cab dry thoroughly before attempting to roll for storage.
2. It is important that the Cab be rolled up for storage rather than folding. Folding will cause damage to the windows!!! Carefully roll up the Cab similar to the way it was when it was packed at the factory. On a large, clean and flat surface, fold the doors over the rear panel first, then, interleave the top and windshield on top of the doors. Begin rolling the Cab into a roll approximately 8 inches in diameter. Put the rolled Cab back into the carton for storage at a normal room temperature. It is best not to expose the Cab to either extreme hot or cold temperatures when storing.
3. A special cleaner conditioner is available from Falcon Ridge that will greatly increase the service life of the Cab Enclosure. In addition, if additional hook and loop sets are needed, they can also be ordered.

Return Policy

If for any reason you choose to return this product it must be returned within **30 days from date item is received**. You **MUST** package the product exactly **as it was originally packaged from the factory to get a full refund for the product!**

The vinyl windows should never be folded when packaging in the box or for storage purposes. Lay all the windows on top of each other with the canvas folded in between and the paper (if available) on both sides of the windows.

All returned products will be inspected upon arrival at the production facility and must be in unused, factory new condition to receive refund - a 25% restocking fee will apply.

If ordered from Falcon Ridge please call at 800-213-7981 to gain a return authorization number, use our preferred shipping carrier (UPS) to return the item (unless the item is defective, you are responsible for paying the shipping to return the item.) **Any returns submitted to Falcon Ridge without a return authorization number will be charged a 20% restocking fee.** If ordered from one of Falcon Ridges many distributors', you must first call them and see what their return policy is. Once your item reaches our production facility, our customer satisfaction team will inspect your item to ensure unused, factory new condition. **NOTE: All windshields must be returned with the original protective film intact and not removed. Do NOT REMOVE if you have any intentions of returning the item. Refund/ replacement of a windshield will only be processed on items with original protective film or if the windshield is defective.**

Items must be properly packaged in the original shipping carton to protect them during transit and ensure your returned item arrives back factory fresh, and in new resalable condition (**any returned items that have been used, altered or damaged in any way will not be subject for a refund.**) All contents including instruction manuals, accessories, hardware, Velcro, etc. must be included in your return shipment. Only items in OEM factory new condition will be approved. Once returned items are received, credit will be issued to the original credit card/ payment method used for the purchase. Outbound shipping and return shipping cost will not be refunded. Please allow 4 to 6 weeks for your refund to be processed.

Warranty

To The Owner of this Product:

Thank you for purchasing one of Falcon Ridge Cab Enclosures, Tops &/or Windshields! Below are the terms under which your product is covered under our manufacturer's warranty.

30 Day Warranty which includes and is not limited to replacing the enclosure, tops and/or windshield due to defect of the product. Please refer to the return policy in this case for more information.

1 Year Warranty includes any defect in material or workmanship within this time frame we will gladly correct the problem or replace the enclosure, tops &/or windshield. Upon submitting for the correction or replacement we will need to receive pictures of the defect in material or workmanship along with the receipt from the date of purchase.